

## Concrete Structures (NZ) Inc, New Zealand, Case Study – Project Monitoring

### Monitoring Construction Progress with iDefigo Smart Cameras

Concrete Structures is a long-established leading New Zealand based precast manufacturing a civil engineering company, strategically positioned in the New Zealand commercial and industrial construction industry.

With the advantage of four precast manufacturing plants, a civil construction division and a modern fleet of trucks, cranes and other construction machinery, Concrete Structures is well-positioned to provide an integrated service to the construction sector with the manufacture, delivery and erection of concrete products for the construction of commercial and industrial buildings, bridges, reservoirs, culverts, underpasses, and other civil structures.

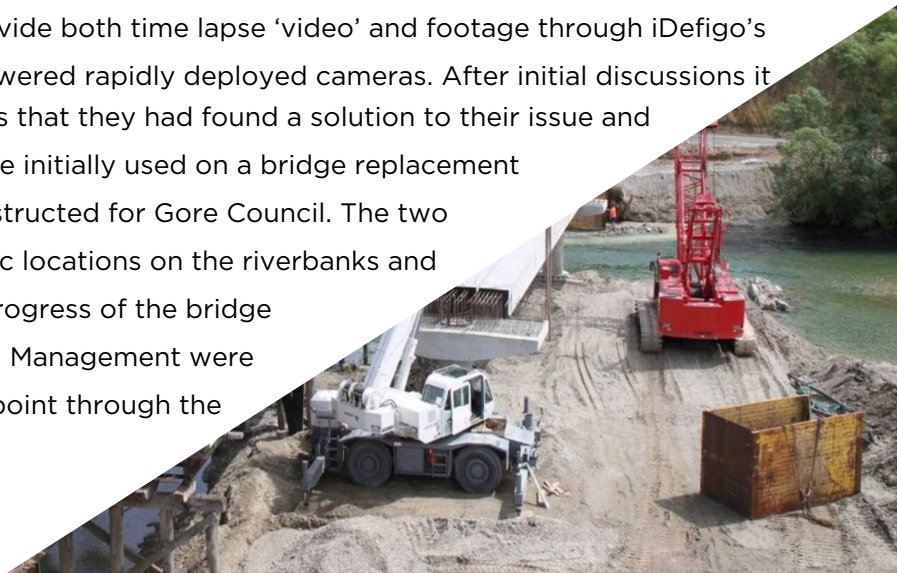
Over the past 32 years, Concrete Structures has successfully completed a vast range of civil and precast projects.

### Issue

Concrete Structures manage projects throughout New Zealand and the management like to monitor progress on what are often complex and time-consuming projects. This is not always possible to do on a frequent basis due to the distance to often remote locations. In addition, these projects are difficult to show and market throughout the various stages of the build except for individual images taken at various points of the construction works.

### Solution

In 2020 Concrete Structures were made aware of iDefigo's remote surveillance cameras that monitor assets and can provide both time lapse 'video' and footage through iDefigo's ID PRO CAM remote battery powered rapidly deployed cameras. After initial discussions it was clear to Concrete Structures that they had found a solution to their issue and bought two cameras. These were initially used on a bridge replacement project on the South Island constructed for Gore Council. The two cameras were placed at strategic locations on the riverbanks and CCTV cameras monitored the progress of the bridge construction from start to finish. Management were then able view the build at any point through the iDefigo cloud-based dashboard.



## Result

Management were able view the build at any point through the iDefigo cloud-based dashboard which meant less trips to site. Since the project's completion Concrete Structures have created a time lapse video of the footage showing the Pyramid bridge being built from start to finish, viewable here which has been used for publicity purposes. <https://www.facebook.com/GoreDC/videos/189916342444668/> . Since this first project, the cameras have been used on two further bridge rebuilding projects the Hinahina Bridge in the Catlins, opened August 2021, and Crisis Road Bridge. The cameras will be used on further construction projects now their benefits have been established. In addition to the benefits outlined in this case study iDefigo surveillance cameras can be used in the building sector for construction site theft, vacated property monitoring, site access and vandalism monitoring.

## About iDefigo

iDefigo, a UK-based specialist in hardware and software solutions for remote surveillance, has a Smart Camera solution which directly addresses the challenges that come with monitoring the most common sites for fly tipping. Unlike CCTV, the Smart Camera offers high-grade cameras that are easily installed anywhere at low cost. The Smart Cameras capture events that matter and transmit images to any device, 24/7, with no on-site power, networking, or integration required. Importantly, the cameras send alerts when a trigger event has occurred, such as an act of fly tipping.



**Visual  
intelligence.  
Anywhere.**

